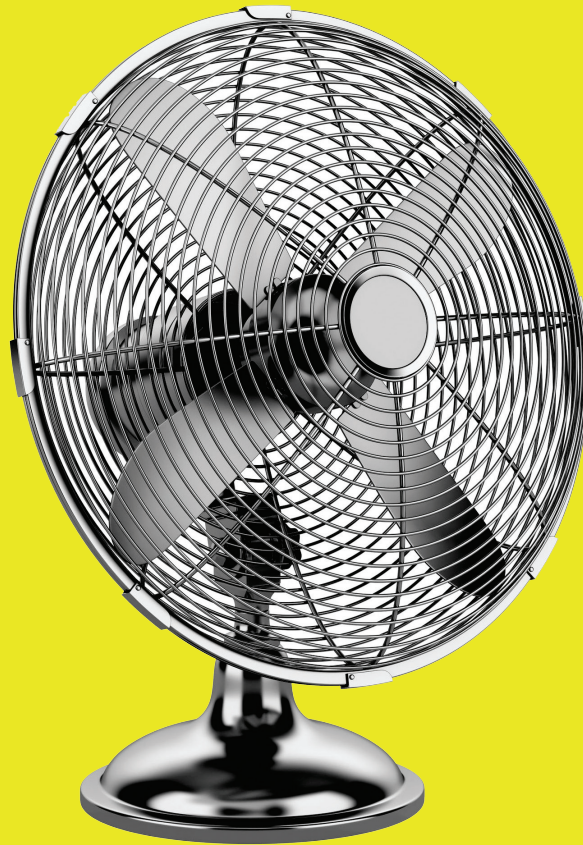


How cool is this?

to have pre-chilled apartment
on a hot day



Control your home appliances even when you are not there

HomiSmartTM
The Connected Family

HomiSmart is a family of interconnected smart sockets that help you and your family stay connected, made to ease your family's life.

Now, with the HomiSmart family you can easily control your home electrical functions using your computer, tablet or smartphone, and begin saving time, money and energy.

It is time to connect to a new technology – The HomiSmart family.

WALLY - In-wall Socket

Meet Wally, the In-Wall Socket and the busiest member of the HomiSmart family. Wally is your personal connection to your home devices.

Beat the morning blues of rushing through everything - Wally will give you a fresh start by taking care of regular tasks such as turning on/off your coffee machine, toaster or any other electronic appliance you choose.



Advantages:

- Save money & energy
- Set alarms for over-use of energy
- Monitor activity made from other devices from iOS and Android simultaneously at real-time
- Manage schedules from anywhere in the world
- Control appliances from your smart phone, tablet & web
- Affordable price tag for excellent value
- 12 month warranty
- High power endurance of up to 16A & 240V appliances
- The HomiSmart app will give tips for a more efficient energy use



Turn appliances on/off



Set timer



Measure energy use



Save energy



Calculate costs



Safe & Secure

Technical Specifications:

- The HomiSmart app is absolutely free and compatible with smart phones and tablets (Android 4.0 or iOS 7 or later)
- The HomiSmart app currently supports 10 languages: English, Russian, German, French, Italian, Portuguese, Arabic, Japanese, Chinese and Hebrew
- Item requires wall installation by a qualified technician
- Wally is compliant with CE marking



Free HomiSmart app on
App Store and Google play

www.homismart.com

